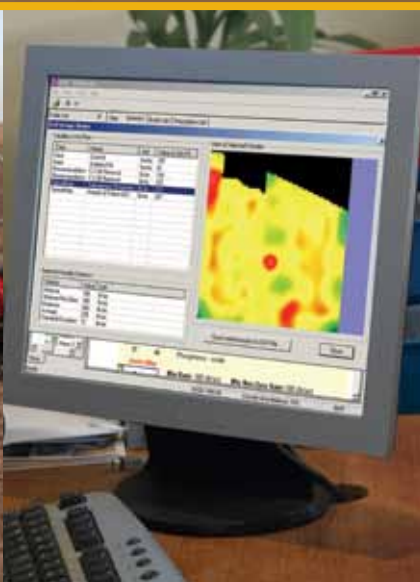
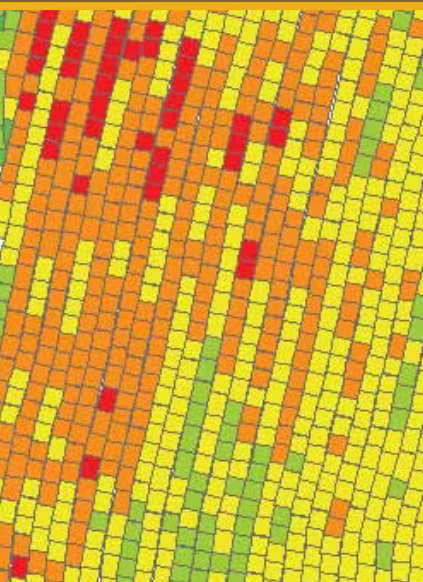


# *SGISfarm*

Precision Farming Software for the Professional Farmer



# SGISfarm

Simple-to-use data management software for farm owners and operators

## A Strong Precision Heritage

Topcon acquired the SGIS business and software product from AGCO Corp. in 2011.

For over 20 years, SGIS Agronomy software was sold almost exclusively in the ag retailer market where it became a key technology component of many successful precision farming service businesses.

From this strong heritage Topcon has developed SGISfarm for the professional farmer. The result is a software program with an "easier to use" interface which focuses only on those functions which have proven to create value and make more money for the farmer.

## Precision from Data Import to Application Control

Like SGISpro, Topcon's new SGISfarm imports and manages all type of data critical to a successful precision farming operation. This includes soil test, harvest, as-applied, as well as crop sensor data. The import process includes automatic quality checking features and after import, there are tools to manually inspect and edit the data if necessary.

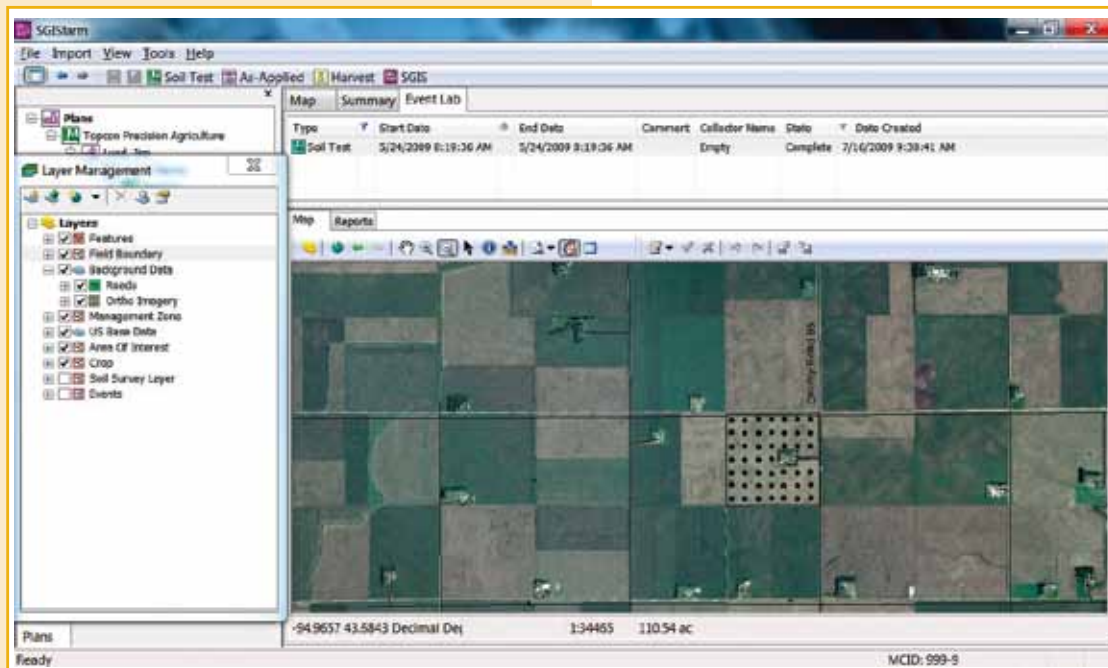
SGISfarm has an open architecture design which complies with international data format standards as well as the most popular GIS and image file standards. This makes it easy to both export and import data from other farm office software programs and controllers.



## "Wizard" like Recommendation Process

SGISfarm features a simple, easy-to-use and learn process for creating variable rate crop input maps without sacrificing quality and reliability. This is done first by focusing on very basic but proven recommendation methods. These methods are then "pre-packaged" in templates which eliminate the need for the user to learn the complex process of writing equations.

Some templates are provided with the product, but new ones created, either by Topcon or your local SGIS Agronomist can be added at any time. This makes it easy to customize SGISfarm to meet the specific needs of your cropping practices and regional economics.



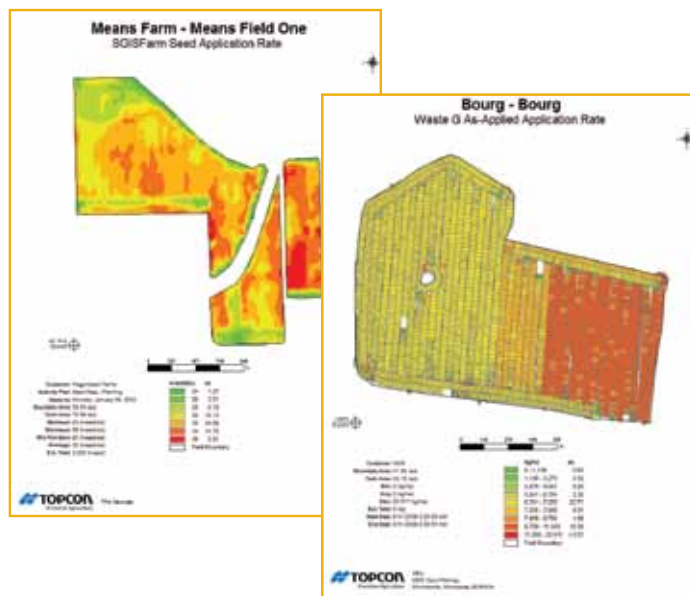
## Topcon Precision Hardware Support

A key strength of SGISfarm is its tight integration with Topcon precision products as well as a number of machines from AGCO, a Topcon strategic partner. SGISfarm is the perfect tool for creating variable rate maps for Topcon's legacy X20, the GX-45 sold with Topcon System 150 as well as the new and innovative X30 console sold with Topcon System 350.



## Valuable Field Data Reports

SGISfarm creates all of the important reports that you need to enhance your management decisions. This includes all nutrient maps from soil probe testing, harvest data such as yield mass and volume and moisture content, and also as-applied data which is the “where and how” of the crop input application.



Variable rate seeding is also an SGISfarm strength, with “Best in Class” support of AGCO planters and those equipped with DICKEY-john IntelliAg™ controls. SGISfarm is also a preferred software for processing and managing harvest data collected by all AGCO combines.



## Third Party Hardware Support

SGISfarm also supports an extensive list of 3rd party controllers and yield monitors many of which may be on your farm.

### Supported Application Controller Formats:

- AGCO Falcon I/II
- AGCO FalconVT
- ISO Task Controller
- ESRI Shape File: INSIGHT, Case IH, New Holland, Trimble, Raven Viper
- AgLeader (.tgt): PF3000, PF3000 Pro, PFadvantage, and INSIGHT
- CNH Flexi-Coil
- Midtech
- Precision Planting 20/20

### Supported Yield Monitor Formats

- AgLeader (.tgt): PF3000, PF3000 Pro, PFadvantage, and INSIGHT
- AgLeader (.yld): Yield Monitor 2000, PF3000, PF3000PRO and PFadvantage
- AGCO Fieldstar: Challenger, Massey, Gleaner
- AGCO Task Controller: Challenger, Massey, Gleaner
- CNH Voyager - grain
- CNH Voyager 2 – grain, cotton
- Deere GS1
- Deere GS2
- Lexion
- ESRI shape file

## SGISfarm Computer System Requirements

- 2.0 GHz Processor or greater
- 1 GB RAM or greater
- 4 GB free hard drive space
- DVD-RW
- Color Printer
- Microsoft Windows 7 Home Premium
- SD Card Reader
- Microsoft Internet Explorer 8.0 or greater
- Internet Service and e-mail address

## SGISfarm Computer System Recommendations

- Dual-Core 2.0 GHz processor or greater
- 2 GB Ram or greater
- 150 GB hard drive or greater
- Windows 7 Home Premium
- High-Speed DSL or cable internet connection

## Built on ESRI Technology

- Industry-leading ESRI ArcGIS 10 components
- all data stored in an ESRI standard file geo-database, compatible with all ESRI GIS software products





## **SGIS**farm

Precision Farming Software  
for the Professional Farmer



**Topcon Precision Agriculture, SGIS**  
5850 Opus Parkway, Suite 160  
Minnetonka, MN 55343  
Phone: 952-912-8400  
Fax : 952-912-8401

**Topcon Precision Agriculture**  
16900 West 118th Terrace  
Olathe, KS 66061 USA  
Phone: 913-928-2630

**Topcon Precision Agriculture**  
14 Park Way  
Mawson Lakes, SA 5095 Australia  
Phone: +61-8-8203-3300  
Fax : +61-8-8203-3399

**Topcon Precision Agriculture**  
Avenida de la Industria 35  
Tres Cantos 28760, Spain  
Phone : +34-91-804-92-31  
Fax : +34-91-803-14-15

**Topcon Positioning Systems, Inc.**  
7400 National Drive,  
Livermore CA 94551 USA  
Phone: 925-245-8300  
Fax: 925-245-8599

**Topcon Corporation**  
75-1 Hasunuma-cho, Itabashi-ku  
Toyko 174-8580 Japan  
Phone: +81-3-5994-0671  
Fax: +81-3-5994-0672

[www.topconpa.com](http://www.topconpa.com)

Specifications subject to change without notice ©2012 Topcon Precision Agriculture All rights reserved P/N: 7010-2100 6/12

The information contained in this publication is intended to be of a general nature only; specific operations may vary from the average, and both crop and machine management, as well as weather, are important factors in the end result.